



## 12 Station Close

Potters Bar, EN6 1TL

**Recently refurbished  
warehouse and office  
building available with  
freehold or by way of a new  
lease**

**2,496 sq ft**

(231.89 sq m)

- Recently Refurbished
- Parking Available
- 8' x 8' Barn Door Warehouse Access
- Kitchenette & W/C Facilities
- LED Lighting
- Air-Conditioned & Heated
- Potters Bar Station (0.2 Miles)

# 12 Station Close, Potters Bar, EN6 1TL

## Summary

<b>Available Size</b>	2,496 sq ft
<b>Rent</b>	£42,000 per annum
<b>Price</b>	£850,000
<b>Business Rates</b>	Upon Enquiry
<b>Legal Fees</b>	Each party to bear their own costs
<b>EPC Rating</b>	D

## Description

A mixed use light industrial property comprising of a large rear warehouse and 2 office rooms on the ground floor and an open plan office and kitchenette on the first floor.

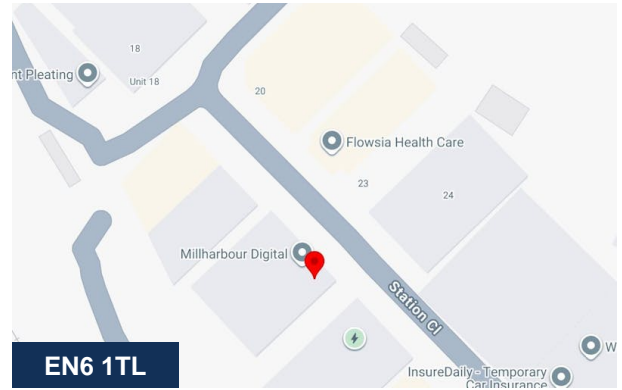
## Location

Located within walking distance of Potters Bar town centre, offering strong links to Central London via Potters Bar Railway Station and access to local amenities. The property is less than 2 miles from the M25 and 3 miles from the A1.

## Terms

The premises are available by way of a new lease for a term by arrangement at a rent of £50,000.00 per annum exclusive.

The freehold interest in the building is available for a price in the region of £850,000.00 subject to the lease of the Unit 1 (small unit to rear of 12 Station Close) which is for a term of 2 years from 04 July 2025 to expire 03 July 2027 at a rent of £8,400.00 per annum. The lease is outside the Landlord & Tenant Act 1954 part II.



## Viewing & Further Information



### George Moriarty

020 8429 9003 | 07522 700 507

george@davidcharles.co.uk



### Daniel Moriarty

020 8429 9009 | 07907 703 640

daniel@davidcharles.co.uk

The above information contained within this email is sent subject to contract. These particulars are for general information only and do not constitute any part of an offer or contract. All statements contained therein are made without responsibility on the part of the vendors or lessors and are not to be relied upon as statement or representation of fact. Intending purchasers or lessees must satisfy themselves, by inspection, or otherwise, as to the correctness of each of the statements of dimensions contained in these particulars. Generated on 29/05/2026



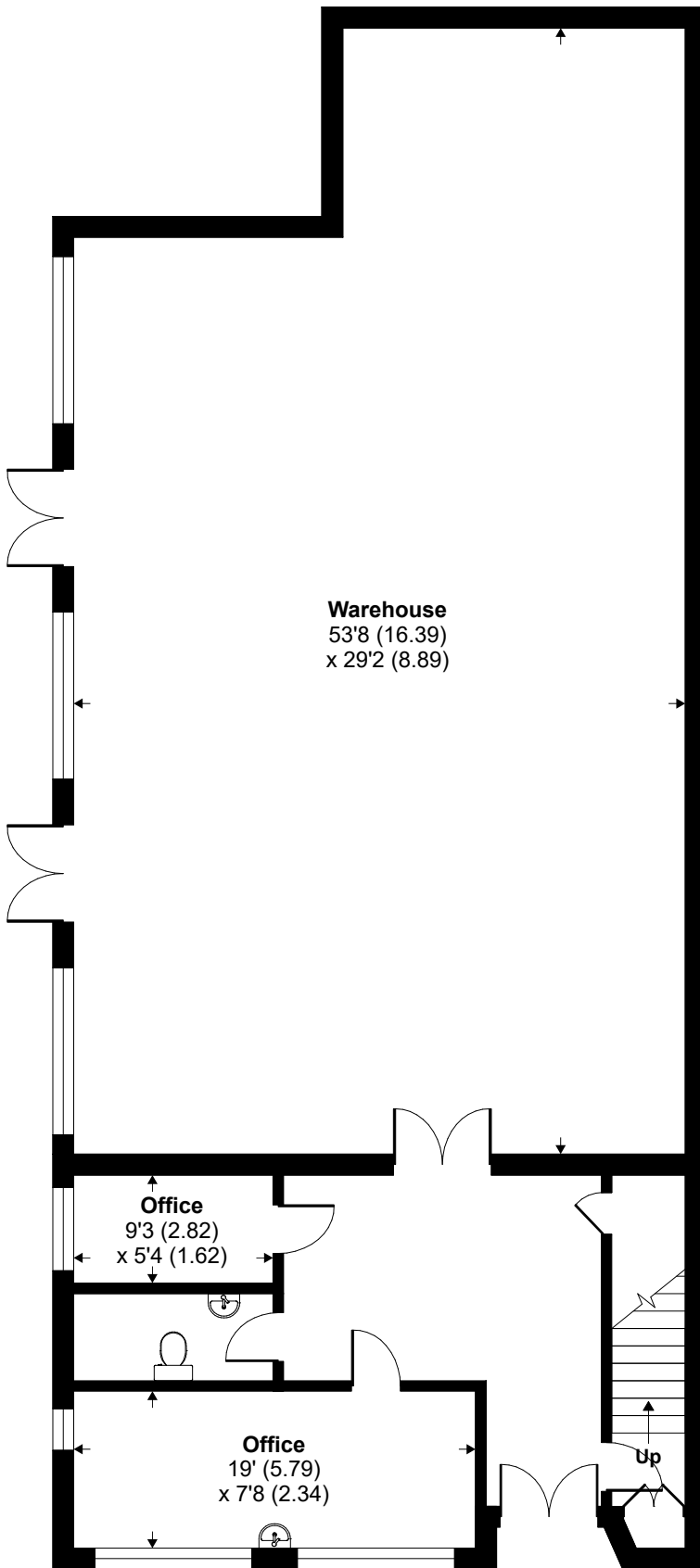




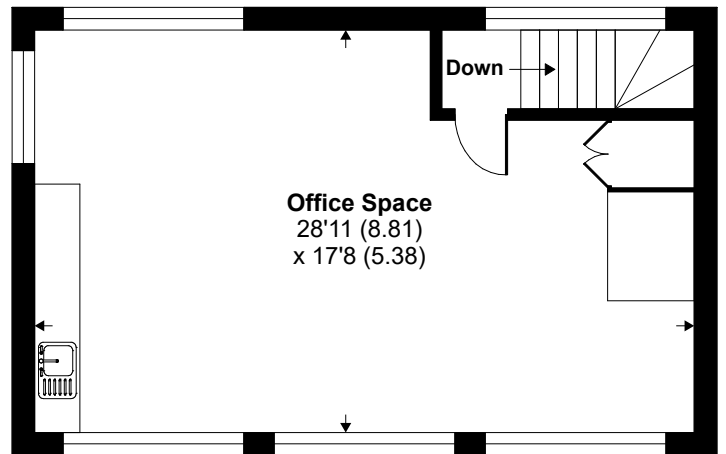
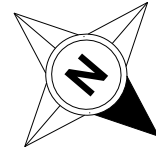
# Station Close, Potters Bar, EN6

Approximate Area = 2496 sq ft / 231.9 sq m

For identification only - Not to scale



**GROUND FLOOR**



**FIRST FLOOR**