



Hemel Business Park, Appspound Lane

Hemel Hempstead, AL2 3NL

Fully Secured Self- Contained Storage Site Available Immediately

15,000 sq ft
(1,393.55 sq m)

- B8 Open Storage
- Securely fenced with gated access
- Water & Electric
- W/C available on site
- Hemel Hempstead Railway Station (4.8 Miles)
- Junction 8 of the M1 (2.1 Miles)
- Junction 21 of M25 (3 Miles)
- Flexible Terms

Hemel Business Park, Appspound Lane, Hemel Hempstead, AL2 3NL

Summary

Available Size	15,000 sq ft
Rent	£6 per sq ft
Rates Payable	£6 per sq ft
VAT	To be confirmed
Legal Fees	Each party to bear their own costs
EPC Rating	EPC exempt - No building present

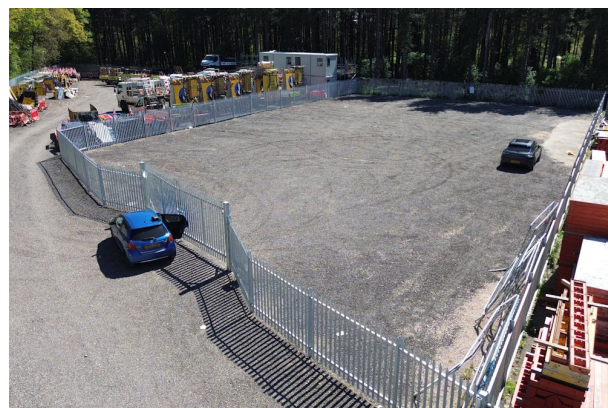
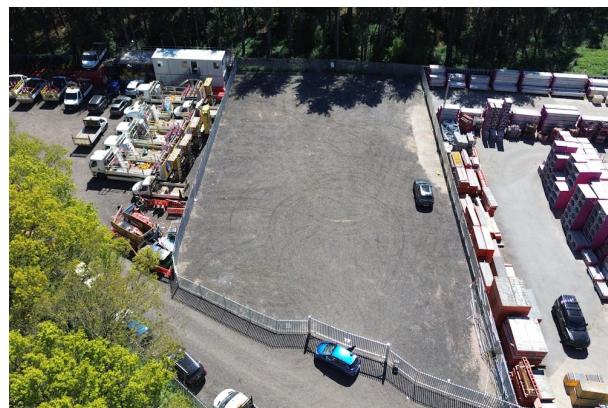
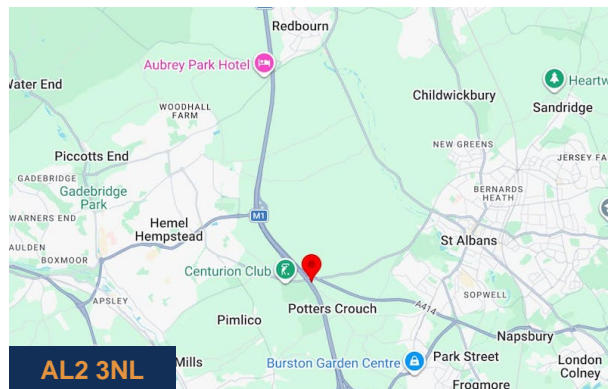
Description

An opportunity to lease a fully secured self-contained storage yard located in the Hemel Business Park, an established commercial location strategically located on the M1 Corridor.

The property comprises a clear, level site suitable for a variety of open storage uses. The site is fenced and sits within a complex of adjoining sites of varying sizes accessed from a fully surfaced estate road.

Location

Hemel Business Park is conveniently located on Appspound Lane, and benefits from excellent road connectivity, with direct access to both Junction 8 of the M1 (2.1 miles), and Junction 21 of the M25 (3 miles). The site is well-positioned for occupiers seeking to serve Hemel Hempstead, St. Albans, Watford, Hatfield, Berkhamstead, and Luton.



Viewing & Further Information



George Moriarty

020 8429 9003 | 07522 700 507

george@davidcharles.co.uk



Daniel Moriarty

020 8429 9009 | 07907 703 640

daniel@davidcharles.co.uk

The above information contained within this email is sent subject to contract. These particulars are for general information only and do not constitute any part of an offer or contract. All statements contained therein are made without responsibility on the part of the vendors or lessors and are not to be relied upon as statement or representation of fact. Intending purchasers or lessees must satisfy themselves, by inspection, or otherwise, as to the correctness of each of the statements of dimensions contained in these particulars. Generated on 19/05/2026