



## Compound 7 Canal Way, Ladbroke Grove

London, W10 5AZ

### Open Storage Compound Available In Part or In Its Entirety on Flexible Terms.

**11,000 to 36,818 sq ft**  
(1,021.93 to 3,420.50 sq m)

- B8 Open Storage Use
- Self-Contained, Secure Site
- 24/7 Access
- On Site Security
- Flexible Terms
- Water & Electric Supply

# Compound 7 Canal Way, Ladbroke Grove, London, W10 5AZ

## Summary

<b>Available Size</b>	11,000 to 36,818 sq ft
<b>Rent</b>	£10 per sq ft
<b>Business Rates</b>	Upon Enquiry
<b>VAT</b>	Applicable
<b>Legal Fees</b>	Each party to bear their own costs
<b>EPC Rating</b>	EPC exempt - No building present

## Description

The compound comprises a self-contained open storage space with hard-standing floor available on flexible terms. The compound is located within an established industrial estate with on-site security offering 24-hour access.

## Location

The compounds are located on Canal Way which is situated just off of Ladbroke Grove behind Sainsbury's supermarket.

Nearby train stations include Kensal Green Underground Station (0.7 mi) served by the Bakerloo Line and London Overground and Ladbroke Grove Underground Station (0.8 mi) which is served by the Circle and Hammersmith & City Lines.

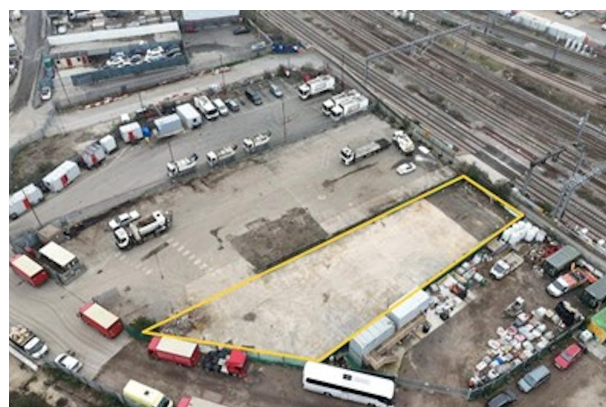
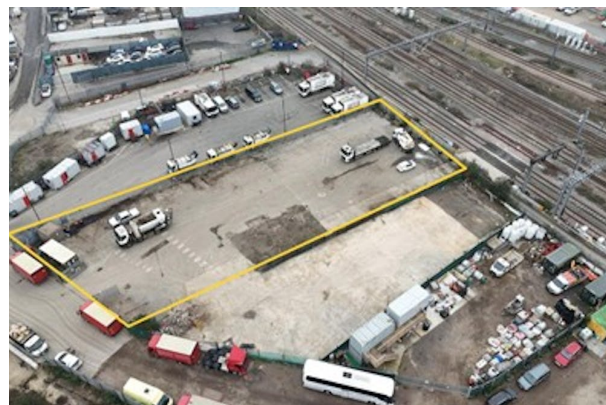
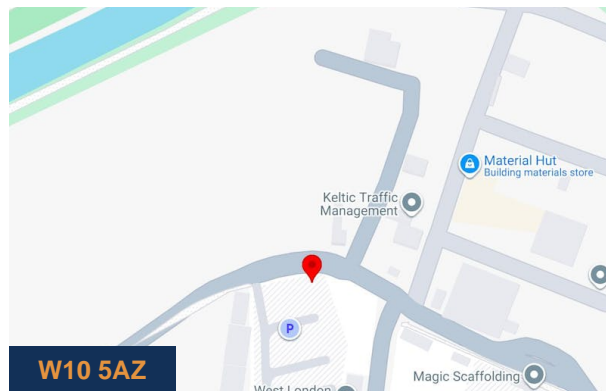
## Accommodation

We have the following compounds currently available for immediate occupation:

Name	sq ft	sq m	Availability
Outdoor - 1	25,000	2,322.58	Available
<b>Total</b>	<b>25,000</b>	<b>2,322.58</b>	

## Terms

The compounds are available by way of a 28-day rolling license



## Viewing & Further Information



**George Moriarty**

020 8429 9003 | 07522 700 507

george@davidcharles.co.uk



**Tom O'Malley**

020 8429 9005 | 07522 700 508

tom@davidcharles.co.uk

The above information contained within this email is sent subject to contract. These particulars are for general information only and do not constitute any part of an offer or contract. All statements contained therein are made without responsibility on the part of the vendors or lessors and are not to be relied upon as statement or representation of fact. Intending purchasers or lessees must satisfy themselves, by inspection, or otherwise, as to the correctness of each of the statements of dimensions contained in these particulars. Generated on 26/05/2026