



Apex House, 23-30 Hythe Road

London, NW10 6RE

Two Storey Warehouse Unit With Substantial Yard Space

82,159 sq ft

(7,632.82 sq m)

- Rear Vehicle Access Ramp
- Secure & Gated Yard
- Electric Rolling Shutters
- Ground Floor Eaves Height - 2.6m
- First Floor Eaves Height - 5.9m
- Hard Standing Floor
- Staff Amenities
- Parking / Service Area
- Office Areas
- Close Proximity To A40/A406

Apex House, 23-30 Hythe Road, London, NW10 6RE

Summary

| | |
|-----------------------|------------------------------------|
| Available Size | 82,159 sq ft |
| Rent | £8.07 per sq ft |
| Business Rates | Upon Enquiry |
| VAT | Applicable |
| Legal Fees | Each party to bear their own costs |
| EPC Rating | C |

Description

Apex House is a modern warehouse unit with substantial yard space benefiting from a structural intermediate floor which can be accessed via the rear vehicle ramp. The premises is fully hard surfaced and secure with access to directly on to Hythe Road as well as access from the rear to the Apex Estate service road.

The intermediate floor has a loading capacity of 5.0 kN/m² suitable for cars and light commercial vehicles, with floor-to-ceiling heights of approximately 2.6 meters at ground floor and up to 5.9 meters at first floor.

Location

Apex Industrial Estate is located in Park Royal and is accessed via the A40 with excellent links to major motorways and Willesden Junction and White City Train Stations being close by.

Accommodation

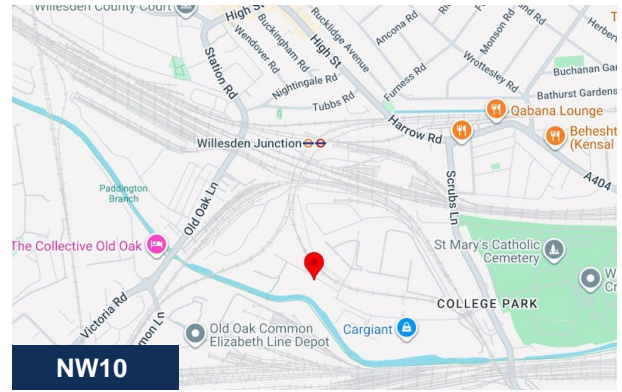
The accommodation comprises the following areas:

| Name | sq ft | sq m | Availability |
|----------------------------|---------------|-----------------|--------------|
| Ground | 24,359 | 2,263.03 | Available |
| 1st | 19,833 | 1,842.55 | Available |
| Outdoor - Rear / Side Yard | 7,860 | 730.22 | Available |
| Outdoor - Main Yard | 30,107 | 2,797.03 | Available |
| Total | 82,159 | 7,632.83 | |

Terms

Up to 5 years max guaranteed occupation. If the lease is structured for a longer period, then a Landlord break becomes effective after the 5th anniversary of the term.

Short term leases can be considered on a case by case basis.



Viewing & Further Information



George Moriarty

020 8429 9003 | 07522 700 507
george@davidcharles.co.uk

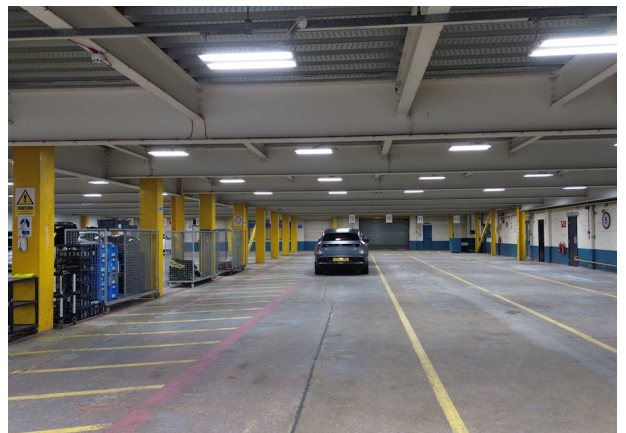
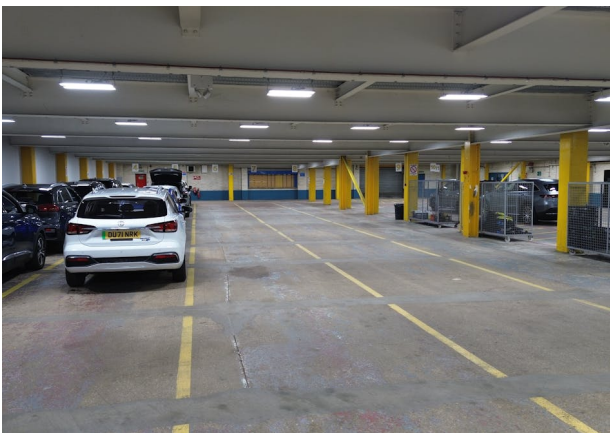
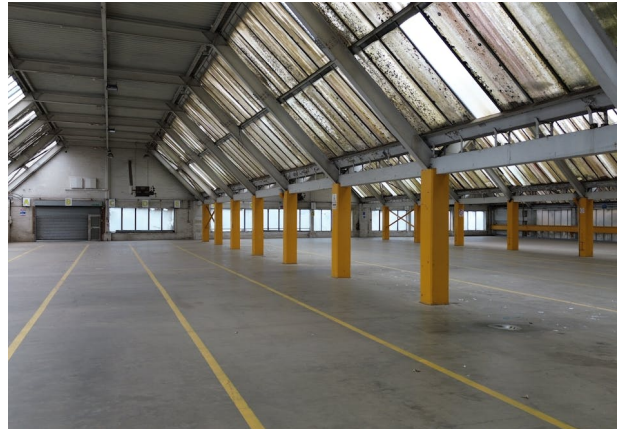


Tom O'Malley

020 8429 9005 | 07522 700 508
tom@davidcharles.co.uk

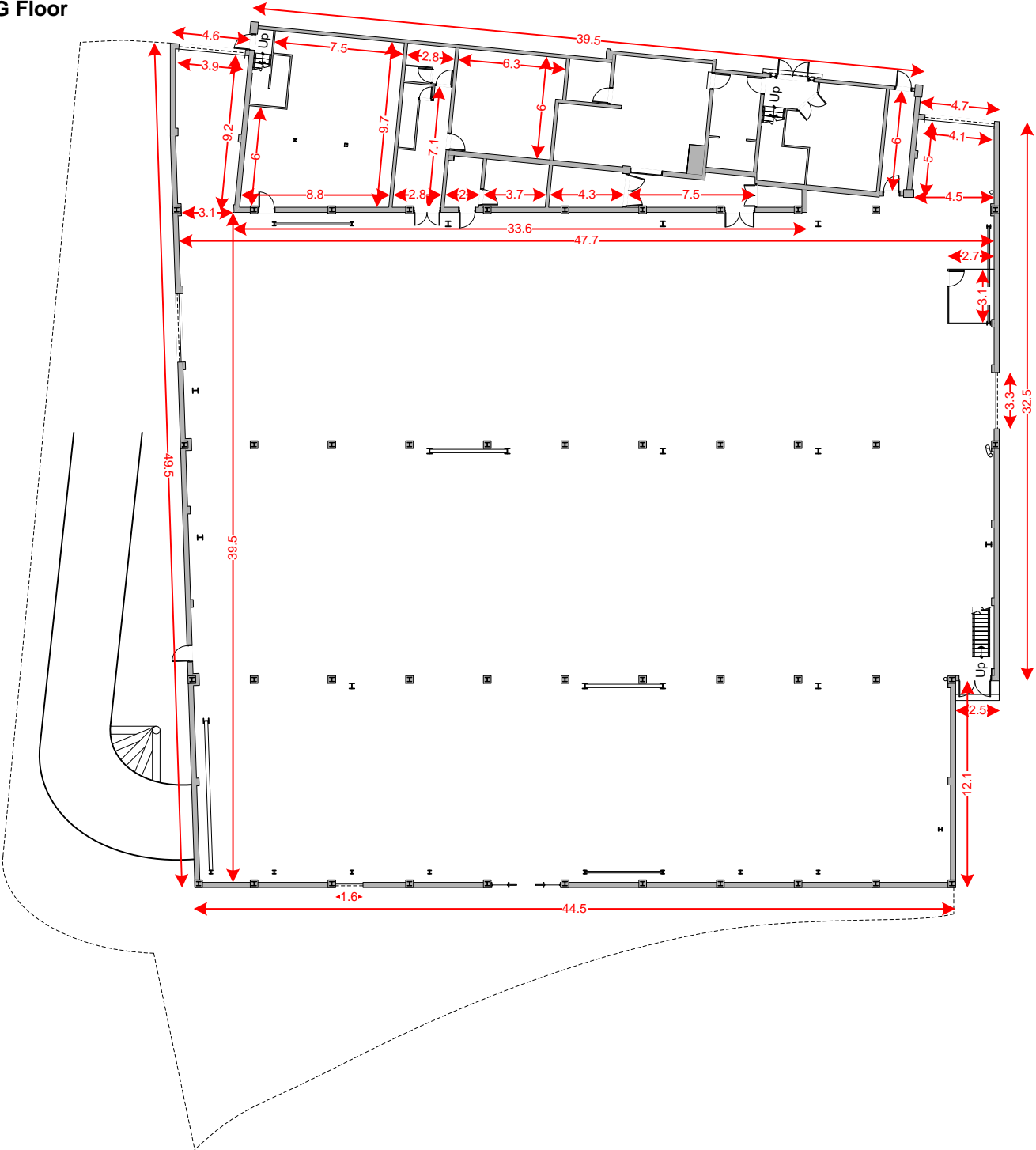
The above information contained within this email is sent subject to contract. These particulars are for general information only and do not constitute any part of an offer or contract. All statements contained therein are made without responsibility on the part of the vendors or lessors and are not to be relied upon as statement or representation of fact. Intending purchasers or lessees must satisfy themselves, by inspection, or otherwise, as to the correctness of each of the statements of dimensions contained in these particulars. Generated on 07/05/2026





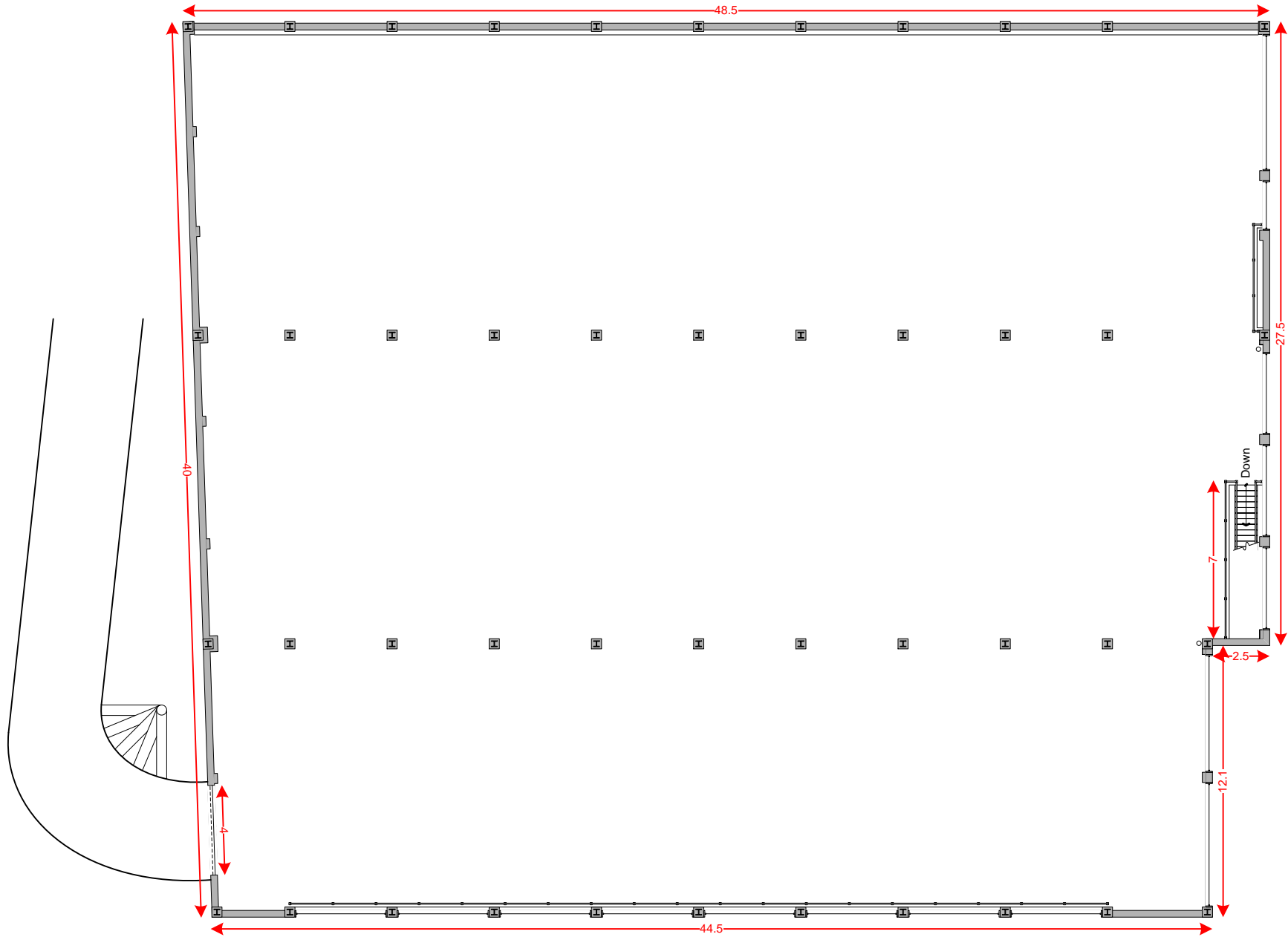


Hythe Road 23-25 – Apex House – G Floor



Building: 2263 m² - 24359 ft²
Yard: 730 m² - 7860 ft²

Hythe Road 23-25 – Apex House – 1st Floor



Building: 1842 m² - 19833 ft²