



Station Yard, Ickenham Road

Ruislip, HA4 7DY

Flexible Concrete Hardstanding Yard

1,000 to 13,500 sq ft

(92.90 to 1,254.19 sq m)

- Secure yard with fencing
- Water + electricity on site
- 1.5 miles to A40, providing access to M25 and M40,
- Situated behind West Ruislip Underground Station.
- Suitable for a variety of commercial uses, including construction, scaffolding, logistics, courier services, and vehicle storage/sales.

Station Yard, Ickenham Road, Ruislip, HA4 7DY

Summary

Available Size	1,000 to 13,500 sq ft
Rent	Rent on application
Business Rates	Upon Enquiry
VAT	Applicable
Legal Fees	Each party to bear their own costs
EPC Rating	EPC exempt - No building present

Description

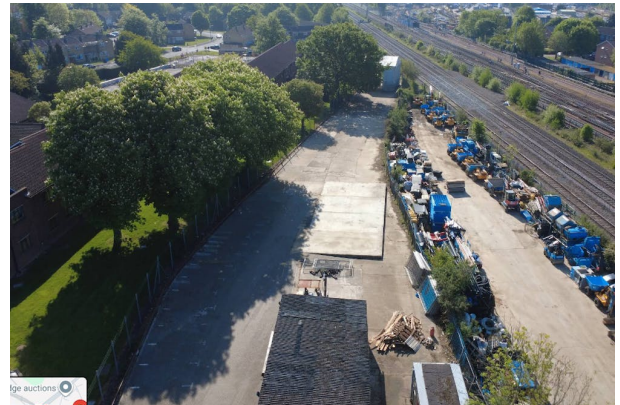
The site comprises a substantial open storage yard extending to approximately 0.835 acres. It is fully concreted throughout, providing a high-quality and secure hard-standing surface suitable for various commercial uses, including construction firms, scaffolding companies, logistics and courier operators, and vehicle storage or car sales. Additionally, the site benefits from onsite water and electricity. There are also two small buildings on-site suitable for office/workshop use.

Location

The site is situated to the rear of West Ruislip Underground Station, which is served by the Central Line and Chiltern Railways. It is conveniently located approximately 1.5 miles from the A40, providing direct access into Central London and westward towards the M25 and M40.

Terms

The site is available to let either as a whole or a part on terms to be agreed.



Viewing & Further Information



George Moriarty

020 8429 9003 | 07522 700 507

george@davidcharles.co.uk

The above information contained within this email is sent subject to contract. These particulars are for general information only and do not constitute any part of an offer or contract. All statements contained therein are made without responsibility on the part of the vendors or lessors and are not to be relied upon as statement or representation of fact. Intending purchasers or lessees must satisfy themselves, by inspection, or otherwise, as to the correctness of each of the statements of dimensions contained in these particulars. Generated on 23/04/2026

