



Titan Compound, Kendal Avenue

London, W3 0TP

**Secure open compound
space available to let.**

36,108 sq ft

(3,354.54 sq m)

- Flexible terms available at competitive rates
- Close Proximity to A40/A406
- Secure gated estate with 24-hour access and security
- Established industrial location
- Fenced and gated compound
- Hard standing concrete floor
- Electricity and Water Supplies

Titan Compound, Kendal Avenue, London, W3 0TP

Summary

| | |
|-----------------------|---------------------|
| Available Size | 36,108 sq ft |
| Rent | Rent on application |
| Business Rates | Upon Enquiry |
| EPC Rating | Upon enquiry |

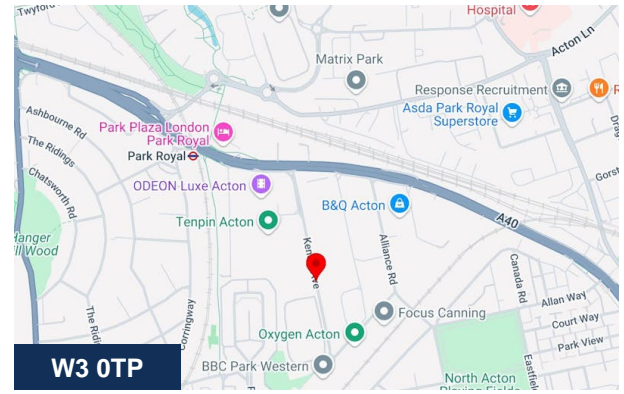
Description

Secure open compound space is available to let in Park Royal. The site is suitable for a variety of uses and is offered on flexible terms at competitive rates. Located within a gated estate, the property benefits from 24-hour access and is conveniently situated close to Park Royal.

Location

Strategically located near the A40 and North Circular, our Park Royal warehouses are ideal for businesses needing industrial space with excellent transport links to London and the rest of the country. Park Royal, North Acton Underground and Hanger Lane Station are nearby too.

Park Royal is also home to an array of shops and restaurants, a cinema, a bowling alley, and a gym.



Viewing & Further Information



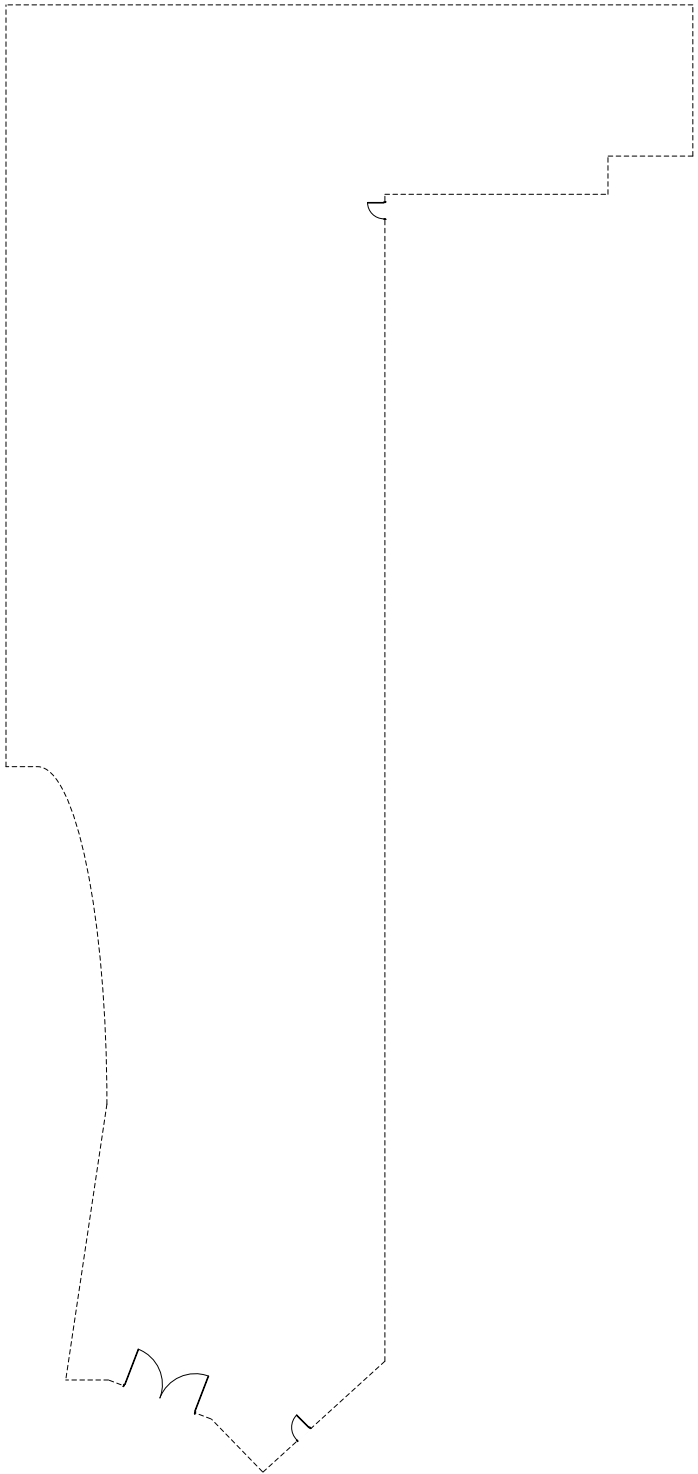
George Moriarty

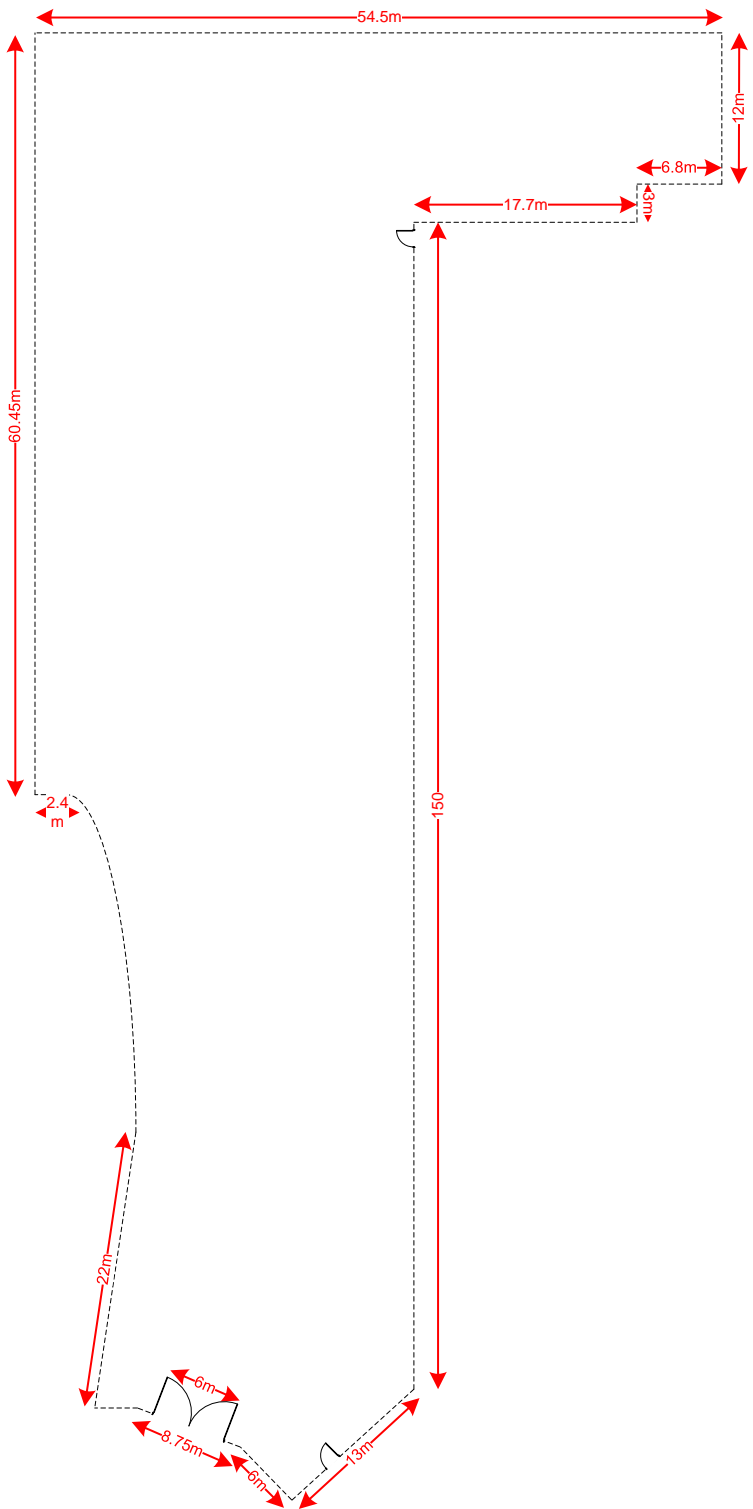
020 8429 9003 | 07522 700 507

george@davidcharles.co.uk

The above information contained within this email is sent subject to contract. These particulars are for general information only and do not constitute any part of an offer or contract. All statements contained therein are made without responsibility on the part of the vendors or lessors and are not to be relied upon as statement or representation of fact. Intending purchasers or lessees must satisfy themselves by inspection, or otherwise, as to the correctness of each of the statements of dimensions contained in these particulars. Generated on 01/04/2026







Yard: 3354.5 m² – 36,108 ft²