



Unit G10, Silverbox House, East Lane Business Park

Wembley, HA9 7FP

Unit G10 is a well-maintained and modernly built warehouse finished to a high standard.

1,932 sq ft

(179.49 sq m)

- Located on a securely gated estate with 24-hour access.
- Close Proximity to A40 / A406
- 3 Phase 100 amp power supply
- Floor to ceiling height of 4.2 metres
- Electric roller shutter
- Hard standing floor
- Facilities to install a kitchenette
- W/C

Unit G10, Silverbox House, East Lane Business Park, Wembley, HA9 7FP

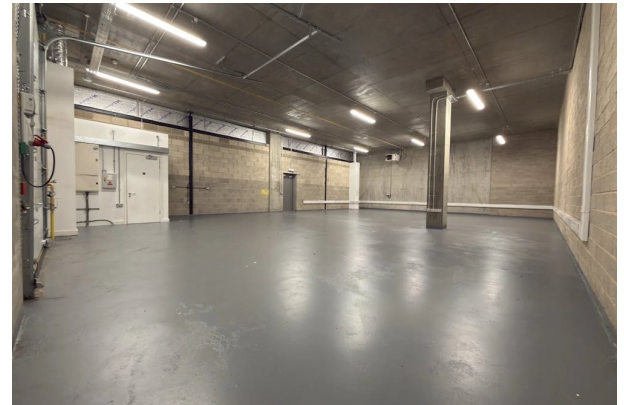
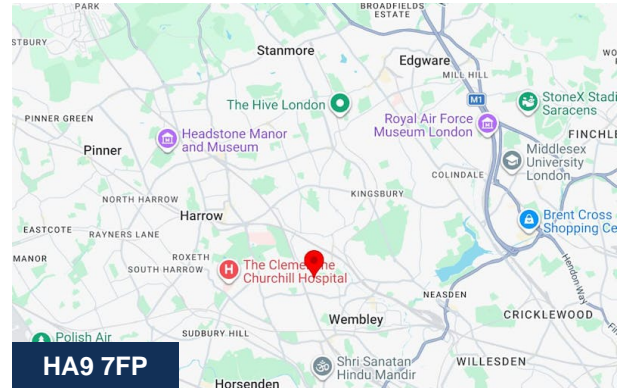
Summary

Available Size	1,932 sq ft
Rent	£40,572 per annum
Business Rates	Upon Enquiry
EPC Rating	Upon enquiry

Description

Unit G10 is a well-maintained and modernly built warehouse finished to a high standard.

It benefits from both a full-height electric roller shutter and a separate pedestrian entrance, ensuring easy access for both deliveries and staff. Offering a clean, versatile layout, this space is ideal for a range of uses.



Viewing & Further Information



Tom O'Malley

020 8429 9005 | 07522 700 508
tom@davidcharles.co.uk



George Moriarty

020 8429 9003 | 07522 700 507
george@davidcharles.co.uk

The above information contained within this email is sent subject to contract. These particulars are for general information only and do not constitute any part of an offer or contract. All statements contained therein are made without responsibility on the part of the vendors or lessors and are not to be relied upon as statement or representation of fact. Intending purchasers or lessees must satisfy themselves, by inspection, or otherwise, as to the correctness of each of the statements of dimensions contained in these particulars. Generated on 30/03/2026

