



72 Pinner Green

Pinner, HA5 2AB

Ground Floor Retail Unit To Let

1,151 sq ft

(106.93 sq m)

- Prominent Retail Location
- Customer Parking Available On The Service Road
- Storage Space To The Rear
- ~1 Mile From Both Pinner & Northwood Hills Metropolitan Line Stations

72 Pinner Green, Pinner, HA5 2AB

Summary

Available Size	1,151 sq ft
Rent	£23,000 per annum
Rates Payable	£6,238.42 per annum
Rateable Value	£12,500
VAT	Applicable
Legal Fees	Each party to bear their own costs
EPC Rating	B

Description

The premises comprise a self-contained A1 retail unit of approximately 1,151 sqft. The unit has the benefit of a tiled floor to the front with a kitchen and storage space to the rear. The shop also has the benefit of one car parking space with customer parking available on the service road at the front of the property.

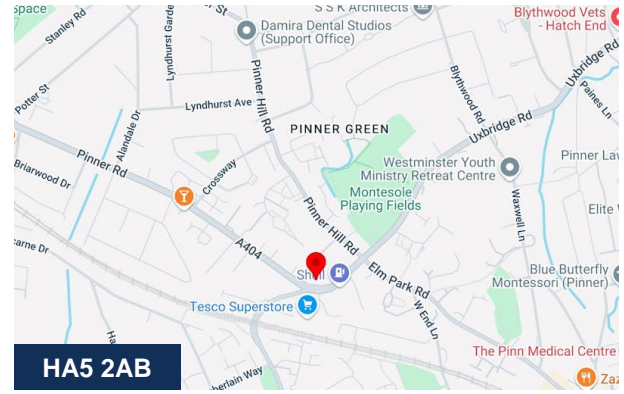
Location

The property is situated in a prominent parade of shops opposite Tesco's in Pinner. The shop benefits from a high level of passing traffic being situated at a busy junction. It is equidistant between Northwood Hills and Pinner Metropolitan Line Stations.

Accommodation

The accommodation comprises the following areas:

Name	sq ft	sq m	Availability
Ground	1,151	106.93	Available
Total	1,151	106.93	



Viewing & Further Information



George Moriarty

020 8429 9003 | 07522 700 507

george@davidcharles.co.uk



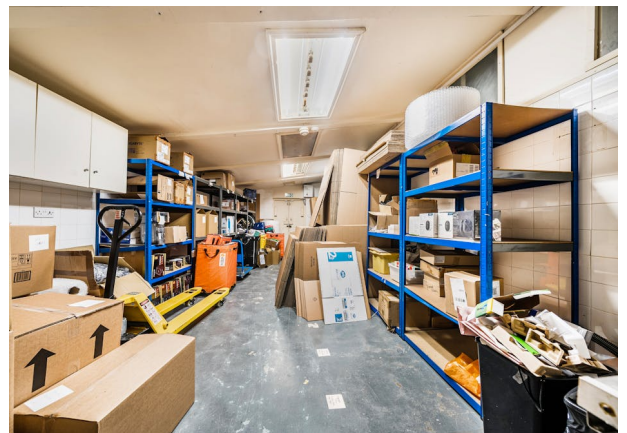
Tom O'Malley

020 8429 9005 | 07522 700 508

tom@davidcharles.co.uk

The above information contained within this email is sent subject to contract. These particulars are for general information only and do not constitute any part of an offer or contract. All statements contained therein are made without responsibility on the part of the vendors or lessors and are not to be relied upon as statement or representation of fact. Intending purchasers or lessees must satisfy themselves, by inspection, or otherwise, as to the correctness of each of the statements of dimensions contained in these particulars. Generated on 31/03/2026



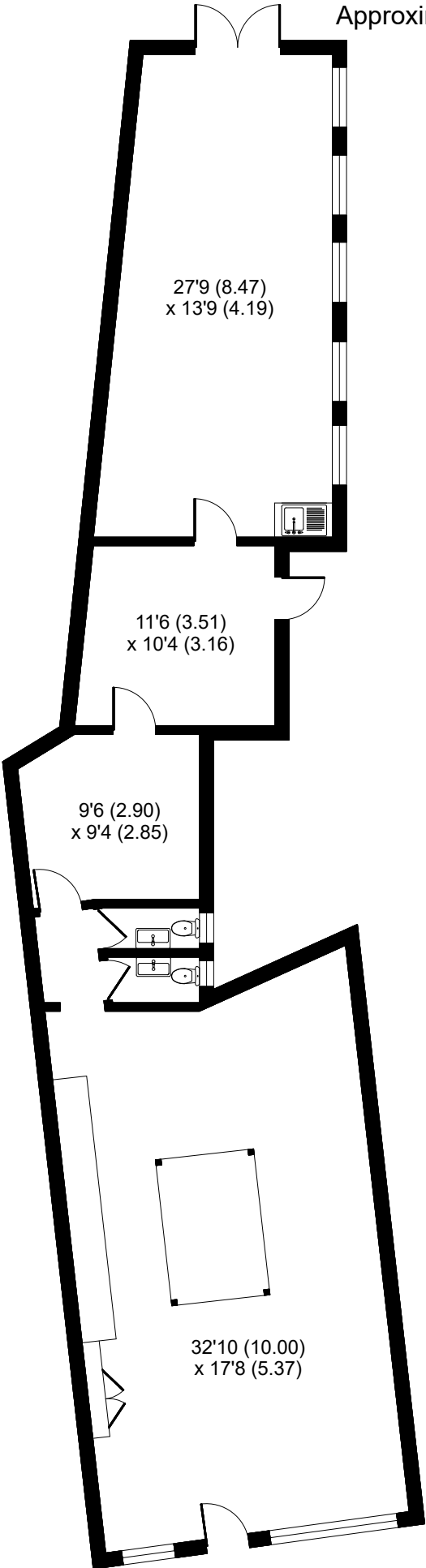
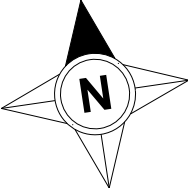




Pinner Green, Pinner, HA5

Approximate Area = 1166 sq ft / 108.3 sq m

For identification only - Not to scale



27'9 (8.47)
x 13'9 (4.19)

11'6 (3.51)
x 10'4 (3.16)

9'6 (2.90)
x 9'4 (2.85)

32'10 (10.00)
x 17'8 (5.37)

GROUND FLOOR