



## **13 Fortune Way, Triangle Industrial Estate**

London, NW10 6UF

**Recently refurbished,  
warehouse unit with an  
open plan layout and good  
internal height.**

**1,240 sq ft**  
(115.20 sq m)

- Dedicated loading bays
- Parking available
- Roller shutter door
- Clear open plan layout
- Close proximity to Central London
- Up to 4.7m ceiling height
- 3 phase, 100 amp power
- Hard standing floor
- 24 hour access

# 13 Fortune Way, Triangle Industrial Estate, London, NW10 6UF

## Summary

Available Size	1,240 sq ft
Rent	£37,200 per annum
Rates Payable	£12,100.75 per annum Estimated per unit
Rateable Value	£24,250
Service Charge	N/A
Car Parking	N/A
VAT	Applicable
Legal Fees	Each party to bear their own costs
Estate Charge	N/A
EPC Rating	Upon enquiry

## Description

The units are ideal for industrial tenants looking for a small or large self contained light industrial unit with a 3.35m roller shutter and 4m eaves height. Each unit has the benefit of electric vehicle charging points, administration offices and three phase power.

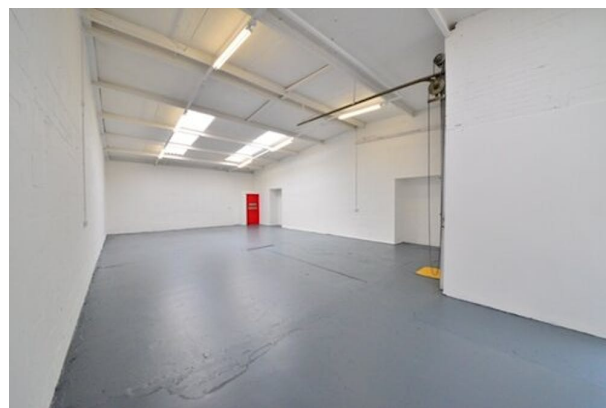
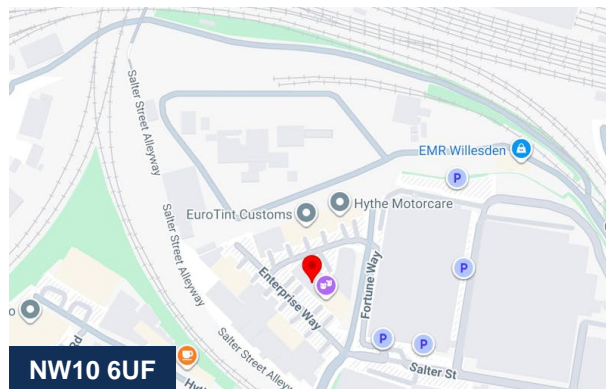
Please note that photos are for a general unit within Triangle Industrial Estate.

## Location

Triangle Industrial Estate is located on Enterprise Way in White City and can be accessed from Scrubs Lane. It is within close proximity to Ladbroke Grove Underground Station providing easy access into central London. Road links such as the M1 and M25 are also very easily accessible.

## Terms

The units are available by way of a new lease by a term of arrangement.



## Viewing & Further Information



### George Moriarty

020 8429 9003 | 07522 700 507  
george@davidcharles.co.uk



### Finlay Milnes

020 8429 9009 | 07522 700 508  
finlay@davidcharles.co.uk

The above information contained within this email is sent subject to contract. These particulars are for general information only and do not constitute any part of an offer or contract. All statements contained therein are made without responsibility on the part of the vendors or lessors and are not to be relied upon as statement or representation of fact. Intending purchasers or lessees must satisfy themselves, by inspection, or otherwise, as to the correctness of each of the statements of dimensions contained in these particulars. Generated on 08/01/2026







