

33-35 Hythe Road

London, NW10 6RS

Secure yard space available to let, ideal for a variety of uses. Flexible terms available at competitive rates.

20,500 to 54,800 sq ft

(1,904.51 to 5,091.09 sq m)

- Flexible terms available at competitive rates
- Close Proximity to A40/A406
- Established industrial location
- Fenced and gated compounds
- Hard standing floor
- Water & Electric Supplies

Summary

Available Size	20,500 to 54,800 sq ft
Business Rates	Upon Enquiry
EPC Rating	Upon enquiry

Description

Secure compound spaces available to let in Hythe Road ideal for a variety of different uses. The compounds are located in a fully secure and gated estate with 24-hour access.

Location

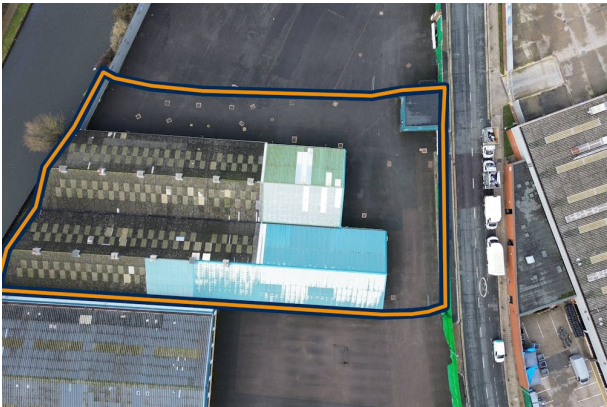
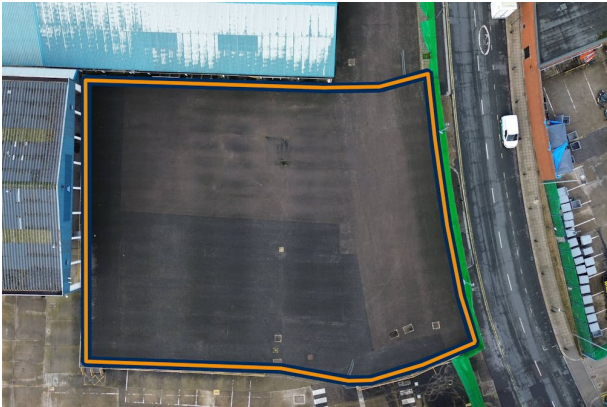
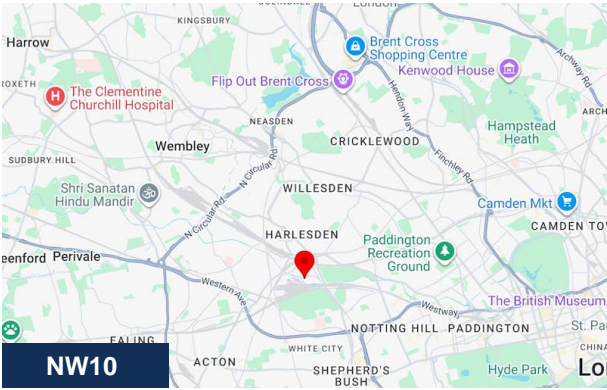
The property is located on Hythe Road due north of the White City junction on the A40 and is just off the A219 (Scrubs Lane).

The A219 links with the A40 Western Avenue providing excellent access into Central London and also the national motorway networks (M1, M4, M40 and M25). Willesden Junction Underground Station (Bakerloo Line) is 1 mile away offering good public transport links into Central London and beyond.

Accommodation

The accommodation comprises the following areas:

Name	sq ft	sq m	Availability
Unit - Compound 1	20,500	1,904.51	Available
Unit - Compound 2	34,300	3,186.57	Available
Total	54,800	5,091.08	



Viewing & Further Information



Finlay Milnes
020 8429 9009 | 07522 700 508
finlay@davidcharles.co.uk



George Moriarty
020 8429 9003 | 07522 700 507
george@davidcharles.co.uk

The above information contained within this email is sent subject to contract. These particulars are for general information only and do not constitute any part of an offer or contract. All statements contained therein are made without responsibility on the part of the vendors or lessors and are not to be relied upon as statement or representation of fact. Intending purchasers or lessees must satisfy themselves, by inspection, or otherwise, as to the correctness of each of the statements of dimensions contained in these particulars. Generated on 26/01/2026

