



## 2A Bishops Walk

Pinner, HA5 5QQ

### Ground floor retail unit

**519 sq ft**

(48.22 sq m)

- Parking available
- Located <5 minutes walk from Pinner underground station
- EPC C rating
- Prominent retail position
- Kitchenette



# 2A Bishops Walk, Pinner, HA5 5QQ

## Summary

Available Size	519 sq ft
Rent	£17,000 per annum
Rates Payable	£7,485 per annum
Rateable Value	£15,000
VAT	To be confirmed
Legal Fees	Each party to bear their own costs
EPC Rating	C

## Description

The property comprises an A1 shop and a kitchenette on the ground floor totaling 519 sq. ft. The shop has an open floor plan with wood flooring and WC facilities.

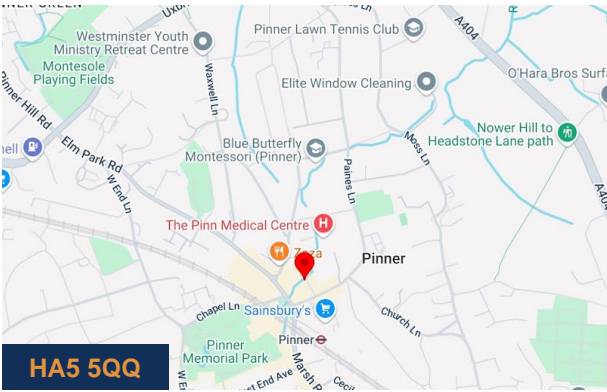
## Location

Bishops Walk is a busy pedestrian walkway between the High Street and the main entrance to Marks and Spencer. The property is in close proximity to Pinner Metropolitan underground Station and other occupiers including Café Rouge, Zizzi, Sainsburys, WH Smith, Foxtons, Starbucks and numerous other local occupiers.

## Accommodation

The accommodation comprises the following areas:

Name	sq ft	sq m	Availability
Ground	519	48.22	Available
<b>Total</b>	<b>519</b>	<b>48.22</b>	



## Viewing & Further Information



**Finlay Milnes**  
020 8429 9009 | 07522 700 508  
finlay@davidcharles.co.uk



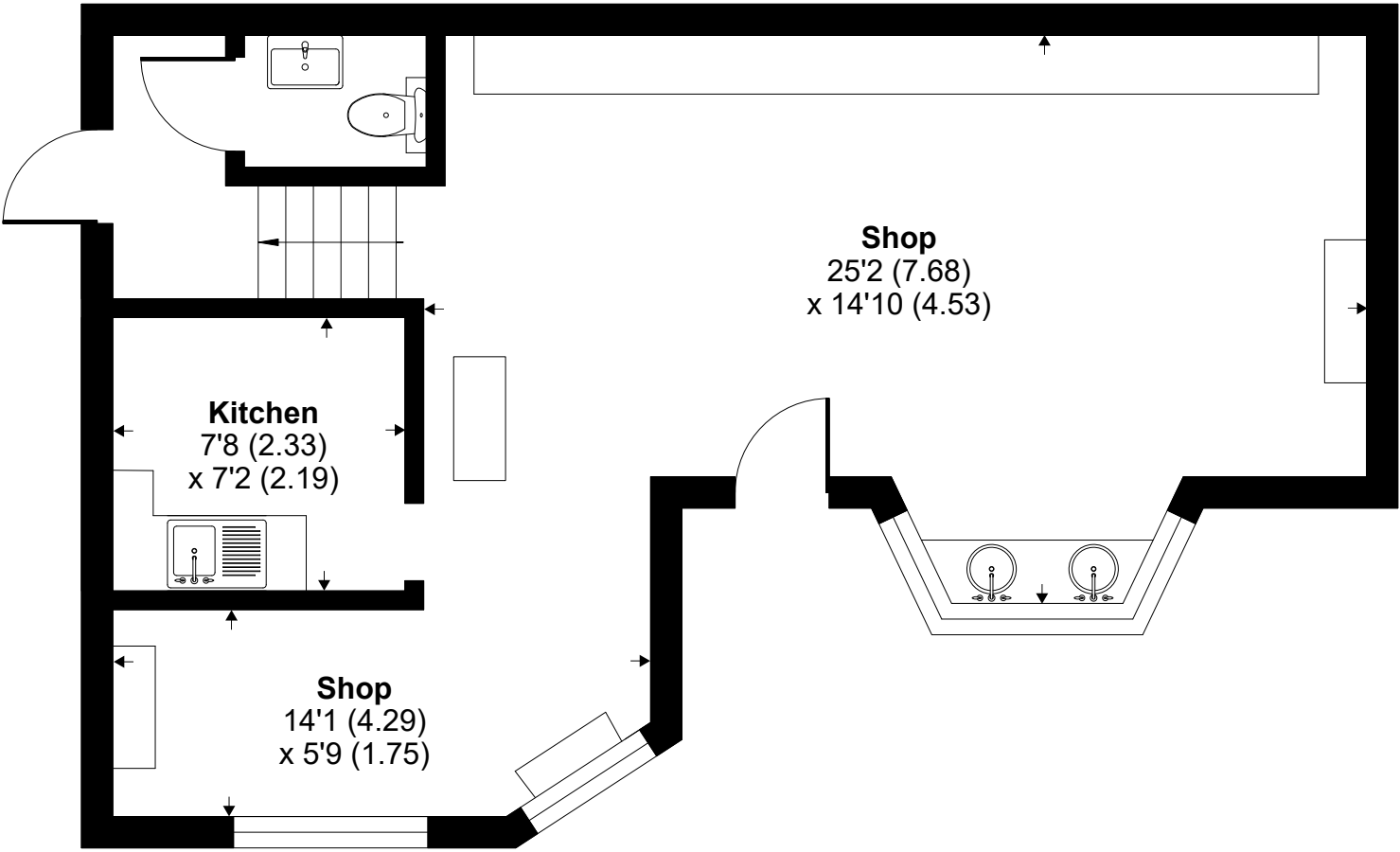
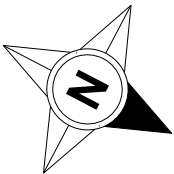
**George Moriarty**  
020 8429 9003 | 07522 700 507  
george@davidcharles.co.uk

The above information contained within this email is sent subject to contract. These particulars are for general information only and do not constitute any part of an offer or contract. All statements contained therein are made without responsibility on the part of the vendors or lessors and are not to be relied upon as statement or representation of fact. Intending purchasers or lessees must satisfy themselves, by inspection, or otherwise, as to the correctness of each of the statements of dimensions contained in these particulars. Generated on 05/01/2026

# Bishops Walk, Pinner, HA5

Approximate Area = 519 sq ft / 48.2 sq m

For identification only - Not to scale



**GROUND FLOOR**

