



1 School Parade, High Street

Uxbridge, UB9 6BT

Ground Floor Lock Up Shop To Let

1,078 sq ft
(100.15 sq m)

- Prominent position
- Rickmansworth Town Centre and Station (3 miles)
- Rear access via service road
- M40 and the M25 motorways within close proximity

1 School Parade, High Street, Uxbridge, UB9 6BT

Summary

Available Size	1,078 sq ft
Rent	£27,000 per annum
Rates Payable	£5,869.50 per annum
Rateable Value	£10,750
VAT	To be confirmed
Legal Fees	Each party to bear their own costs
EPC Rating	D

Description

The unit comprises a ground floor lock-up shop with a rear garage situated on Harefield High Street featuring a glazed shopfront and manual roller shutters.

Location

The unit is located on Harefield High Street, rear access is via a service road off Merle Avenue. Positioned prominently, the unit will benefit from the foot traffic on the High Street, as well as its proximity to various amenities such as pubs, restaurants, convenience stores, and cafes. The property is approximately 3 miles to the south of Rickmansworth town center with its metropolitan line underground station and is easily accessible to both the M40 and the M25 motorways.

Accommodation

The accommodation comprises the following areas:

Name	sq ft	sq m	Availability
Ground	857	79.62	Let
Ancillary	221	20.53	Let
Total	1,078	100.15	



Viewing & Further Information



Finlay Milnes
020 8429 9009 | 07522 700 508
finlay@davidcharles.co.uk

The above information contained within this email is sent subject to contract. These particulars are for general information only and do not constitute any part of an offer or contract. All statements contained therein are made without responsibility on the part of the vendors or lessors and are not to be relied upon as statement or representation of fact. Intending purchasers or lessees must satisfy themselves, by inspection, or otherwise, as to the correctness of each of the statements of dimensions contained in these particulars. Generated on 14/11/2025

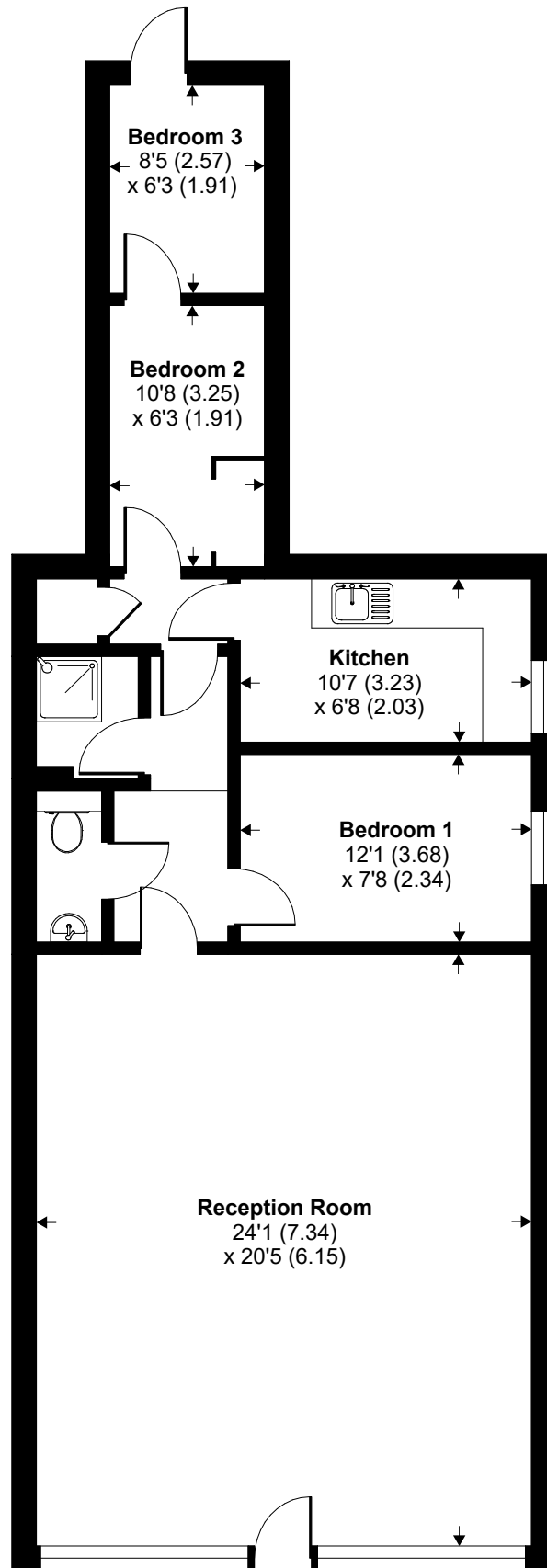




School Parade, High Street, Harefield, Uxbridge, UB9

Approximate Area = 927 sq ft / 86.1 sq m

For identification only - Not to scale



GROUND FLOOR

