



Unit 1C

Headstone Lane, Chantry Place, Harrow, HA3 6NY

NEW BUILD LIGHT INDUSTRIAL UNIT - TO LET

2,988 sq ft
(277.59 sq m)

- 2,574 sqft
- 3 phase power supply
- Concrete mezzanine
- Parking available
- 5-minute walk from Headstone Lane Station

Unit 1C, Headstone Lane, Chantry Place, Harrow, HA3 6NY

Summary

Available Size	2,988 sq ft
Rent	£55,000 per annum
Business Rates	Upon Enquiry
Legal Fees	Each party to bear their own costs
EPC Rating	A

Description

The premises comprises a modern light industrial unit situated within a self-contained estate. The unit has been recently constructed and is built to a high specification, presenting well throughout. The unit also benefits from a 25ft electric roller shutter, 3 phase power supply, concrete mezzanine, and parking.

Location

The property is located to the west of Headstone Lane on Chantry Place Industrial Estate, Harrow and access is off Headstone Lane via Chantry Place Estate Road. The site is located 1 mile to the north of Harrow Town Center & 1 mile to Harrow & Wealdstone. Headstone Lane Train Station is 0.4 miles from the property and provides access into Central London via Euston Station (approx. 34 minutes). Externally there is shared parking along the estate road via allocated parking permits.

Accommodation

The accommodation comprises the following areas:

Name	sq ft	sq m	Availability
Ground - Warehouse	1,573	146.14	Let
1st - Warehouse	1,415	131.46	Let
Total	2,988	277.60	

Rent

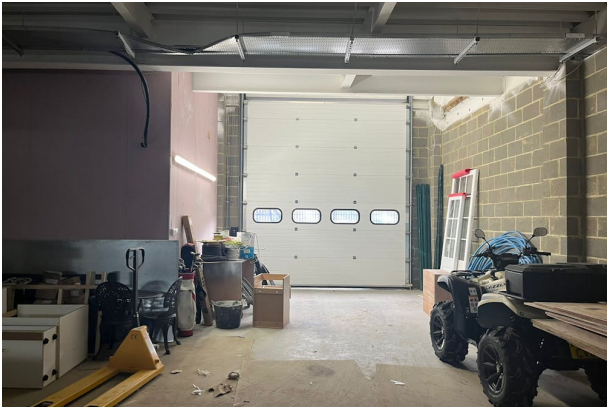
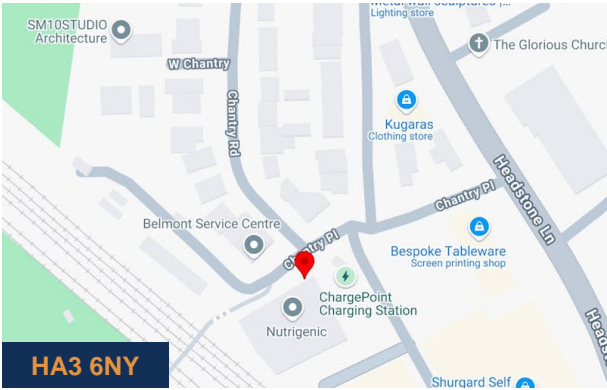
£55,000 per annum exclusive

Business Rates

Prospective tenants are advised to make their own enquires with Harrow Council in this regard.

Lease

The property is available by way of a new lease for a term by arrangement.



Viewing & Further Information



Finlay Milnes
020 8429 9009 | 07522 700 508
finlay@davidcharles.co.uk



George Moriarty
020 8429 9003 | 07522 700 507
george@davidcharles.co.uk

The above information contained within this email is sent subject to contract. These particulars are for general information only and do not constitute any part of an offer or contract. All statements contained therein are made without responsibility on the part of the vendors or lessors and are not to be relied upon as statement or representation of fact. Intending purchasers or lessees must satisfy themselves, by inspection, or otherwise, as to the correctness of each of the statements of dimensions contained in these particulars. Generated on 04/08/2025