



Nickron House

1 Bury Lane, Rickmansworth, WD3 1DN

Serviced Office Suite Situated on First Floor

817 sq ft

(75.90 sq m)

- Inclusive of all utilities
- 2 parking spaces
- Rickmansworth Met Line Station (0.8 miles)
- Kitchen / toilet facilities

Nickron House, 1 Bury Lane, Rickmansworth, WD3 1DN

Summary

Available Size	817 sq ft
Rent	£2,000 per month
Rates Payable	£10,101 per annum
Rateable Value	£18,500
VAT	To be confirmed
Legal Fees	Each party to bear their own costs
EPC Rating	Upon enquiry

Description

The available office accommodation is situated on the first floor of a brick-constructed building with a pitched roof. The first floor comprises of two generously sized office rooms. Shared W/C facilities and a kitchen are located on the ground floor, and the premises benefit from two allocated parking spaces.

Location

Bury Lane is located just off Rickmansworth High Street where there are a number of retailers such as Wenzel's, Iceland, Starbucks, Marks & Spencer and several pubs and restaurants.

Rickmansworth underground station is just 0.8 miles from Bury Lane and is served by the Metropolitan Line providing easy access into Central London.

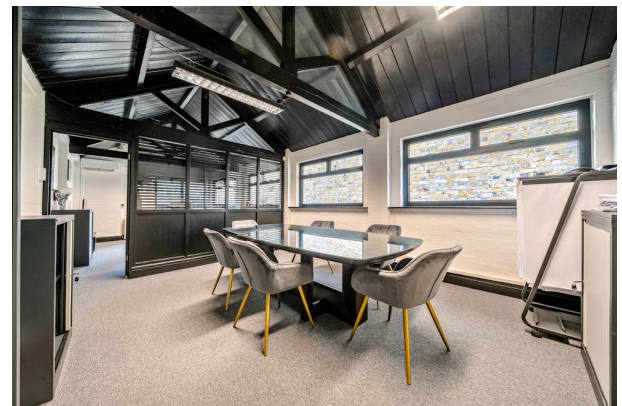
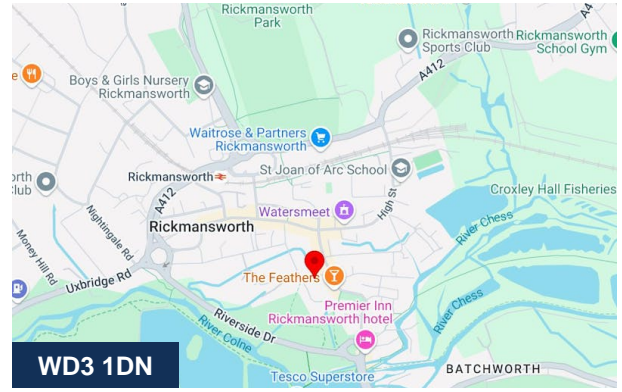
Accommodation

The accommodation comprises the following areas:

Name	sq ft	sq m	Availability
1st	817	75.90	Available
Total	817	75.90	

Terms

The office is available on flexible lease terms.



Viewing & Further Information



Lily O'Donnell

020 8429 9009 | 07522 700508

lily@davidcharles.co.uk

The above information contained within this email is sent subject to contract. These particulars are for general information only and do not constitute any part of an offer or contract. All statements contained therein are made without responsibility on the part of the vendors or lessors and are not to be relied upon as statement or representation of fact. Intending purchasers or lessees must satisfy themselves, by inspection, or otherwise, as to the correctness of each of the statements of dimensions contained in these particulars. Generated on 21/02/2025

