



15 Quad Road, East Lane Business Park

Wembley, HA9 7NA

Ground Floor Light Industrial Unit To Let

2,872 sq ft
(266.82 sq m)

- Close Proximity to A40/A406
- Secure gated estate with 24 hour access and security
- Established industrial location
- Open plan layout

15 Quad Road, East Lane Business Park, Wembley, HA9 7NA

Summary

Available Size	2,872 sq ft
Rent	£49,980 per annum
Business Rates	Upon Enquiry
Service Charge	£4,884 per annum
VAT	To be confirmed
Legal Fees	Each party to bear their own costs
EPC Rating	Upon enquiry

Accommodation

The accommodation comprises the following areas:

Name	sq ft	sq m	Availability
Ground	2,872	266.82	Available
Total	2,872	266.82	

Description

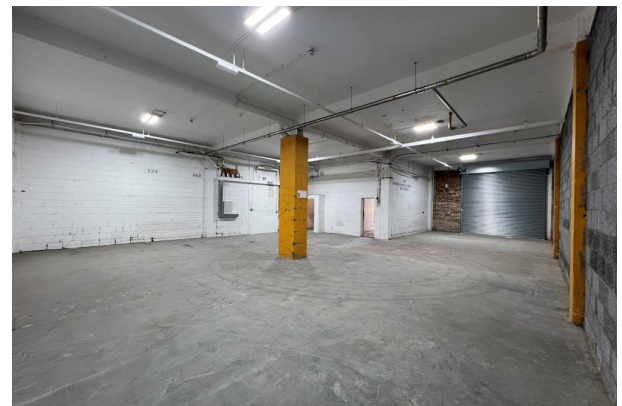
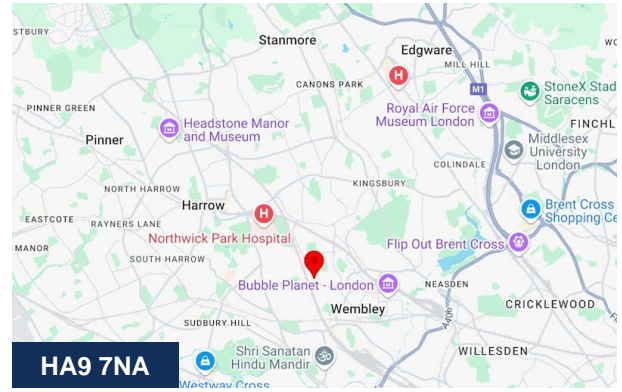
The premises comprises a brick built open plan warehouse with concrete floor, 3 phase power, 4.2m eaves height, built in W/Cs and a dedicated loading bay to the front of the unit.

Location

Located within East Lane Business Park Estate and it benefits from excellent transport links, with National Rail, Overground and Underground (Bakerloo line) services just a 5-minute walk away at North Wembley station. The business park is also easily accessible by car via the M25, M1 and M40 motorways.

Terms

The Unit is available by way of new lease for a term by arrangement.



Viewing & Further Information



George Moriarty

020 8429 9003 | 07522 700 507

george@davidcharles.co.uk



Lily O'Donnell

020 8429 9009 | 07522 700508

lily@davidcharles.co.uk

The above information contained within this email is sent subject to contract. These particulars are for general information only and do not constitute any part of an offer or contract. All statements contained therein are made without responsibility on the part of the vendors or lessors and are not to be relied upon as statement or representation of fact. Intending purchasers or lessees must satisfy themselves, by inspection, or otherwise, as to the correctness of each of the statements of dimensions contained in these particulars. Generated on 30/10/2024

