



5-21 Bollo Bridge Road

London, W3 8AT

First class open storage yard to let in Acton

20,331 sq ft

(1,888.81 sq m)

- 7 miles from Central London.
- 2 miles to A40 Western Avenue & A406 North Circular.
- Existing trade counter and offices.
- Self-dedicated entrance & exit.
- Concrete hard surfaced yard.

5-21 Bollo Bridge Road, London, W3 8AT

Summary

Available Size	20,331 sq ft
Rent	Rent on application
Business Rates	Upon Enquiry
EPC Rating	Upon enquiry

Description

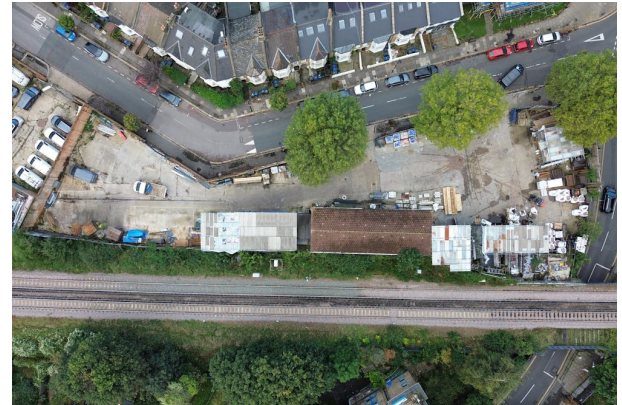
The property comprises a first-class yard facility that has been used as a builder's merchant since 1996. The yard is of rectangular shape with excellent frontage to Acton Lane which is the main road linking Acton and Chiswick together. Internally, the yard is concrete hard surfaced throughout with a central trade counter and office above. There are certain covered areas used for storage of materials.

Location

The site is situated in a prominent position on the junction of Acton Lane and Bollo Bridge Road within a dense residential area. The site is easily accessible to the A40 Western Avenue and A406 North Circular via Hanger Lane (2 miles). Chiswick High Street is 1.5 miles from the site and South Acton Overground Station is within 0.5 miles from the site providing links to London Euston in 40 minutes.

Marketing Video

<https://vimeo.com/1015739723?>



Viewing & Further Information



George Moriarty

020 8429 9003 | 07522 700 507

george@davidcharles.co.uk

The above information contained within this email is sent subject to contract. These particulars are for general information only and do not constitute any part of an offer or contract. All statements contained therein are made without responsibility on the part of the vendors or lessors and are not to be relied upon as statement or representation of fact. Intending purchasers or lessees must satisfy themselves, by inspection, or otherwise, as to the correctness of each of the statements of dimensions contained in these particulars. Generated on 03/10/2024

