



Cadogan House

60 Hythe Road, London, NW10 6RS

**Three storey warehouse
building with hard standing
yard and a goods lift.**

28,156 sq ft
(2,615.78 sq m)

- Total of 28,156 sqft
- 3 Phase power
- Side access either side of the building
- Allocated parking spaces
- Nearby public transport (Willesden Junction 1.1 mi & Kensal Green 0.9 mi)

Cadogan House, 60 Hythe Road, London, NW10 6RS

Summary

Available Size	28,156 sq ft
Rent	£7.88 per sq ft
Rates Payable	£24,023.55 per annum
Rateable Value	£46,921
Service Charge	N/A
VAT	Applicable
Legal Fees	Each party to bear their own costs
EPC Rating	Upon Enquiry

Description

The building comprises a three storey warehouse building benefitting from front, side and rear access via full height roller shutters. To the rear of the property there is also a large goods lifts suitable for vehicles providing access to all three floors and car parking surrounding the premises. The premises also benefits from three phase power and 3.2m eaves height.

Location

The building is located on Hythe Road in White City. Access to the A40 is close by with excellent links to the motorway network and surrounding areas. Willesden Junction and White City Train Stations are close by providing easy access to Central London.

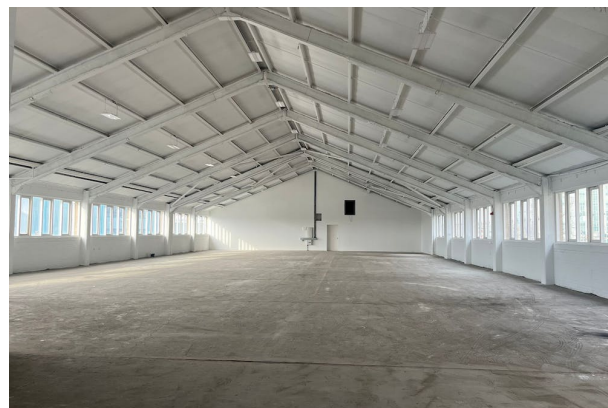
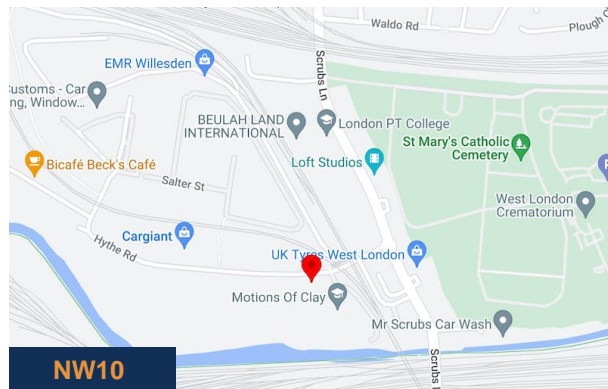
Accommodation

The accommodation comprises the following areas:

Name	sq ft	sq m	Availability
Unit	28,156	2,615.78	Available
Total	28,156	2,615.78	

Terms

The property is available by way of a new lease for a term by arrangement.



Viewing & Further Information



George Moriarty

020 8429 9003 | 07522 700 507
george@davidcharles.co.uk



Lily O'Donnell

020 8429 9009 | 07522 700508
lily@davidcharles.co.uk

The above information contained within this email is sent subject to contract. These particulars are for general information only and do not constitute any part of an offer or contract. All statements contained therein are made without responsibility on the part of the vendors or lessors and are not to be relied upon as statement or representation of fact. Intending purchasers or lessees must satisfy themselves, by inspection, or otherwise, as to the correctness of each of the statements of dimensions contained in these particulars. Generated on 05/01/2024