

# HYDE HOUSE, THE HYDE COLINDALE, NW9 6LH

  
david charles  
property consultants

**020 8866 0001**

**1,285 SQ FT – 8,250 SQ FT / 119.3 SQM – 766.4 SQM**

**PROMINENT REFURBISHED OFFICE SUITES WITH PARKING – TO BE LET**



## LOCATION

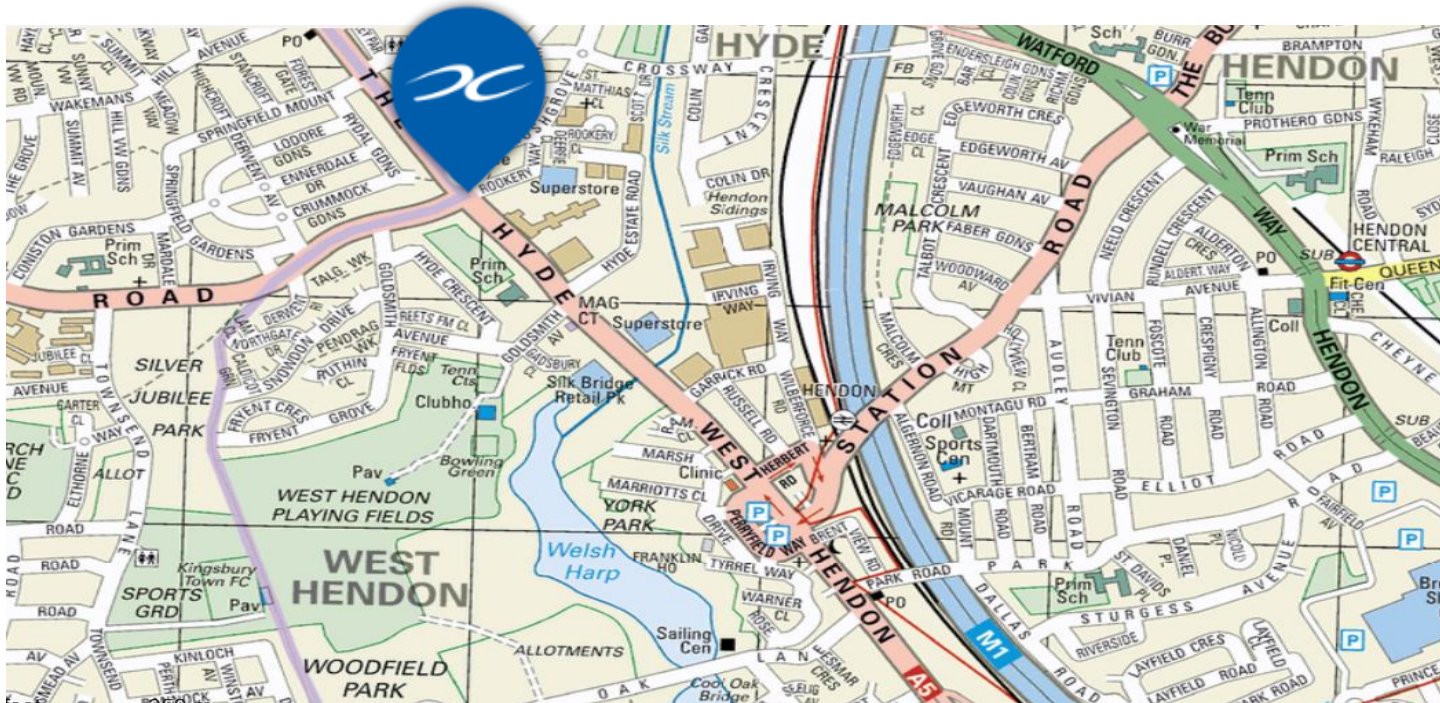
The property is located in a prominent position on the north side of the A5 Edgware Road, opposite the junction with the A4006 Kingsbury Road. The A406 North Circular, A40, M40 and M1 Motorways are close by as are Hendon Mainline and Colindale and Kingsbury Underground Stations. There are numerous bus routes and retail facilities within walking distance.

## DESCRIPTION

Hyde House is a landmark, office building which has undergone a comprehensive transformation to become a five floor Premier Inn hotel with multiple office tenants over the 6 remaining upper floors. The available accommodation offers a range of options from self contained suites to entire floors.







## LEASE

The suites are available by way of a new full repairing and insuring lease for a term by arrangement.

## RENT

£16.00 per sq ft per annum exclusive of rates and service charge.

NB: 11<sup>th</sup> floor - £18.50 per sq ft per annum exclusive of rates and service charge.

Please note VAT is applicable to both.

## RATES

The rates payable are approximately £5 psf. Prospective tenants are strongly advised to reconfirm this information prior to legal commitment.

## FLOOR AREA

9 <sup>th</sup> Floor A	1,335 sq ft	124 sqm
9 <sup>th</sup> Floor B	1,285 sq ft	119.3 sqm
11 <sup>th</sup> Floor	5,630 sq ft	515.8 sqm
<b>Total</b>	<b>8,250 sq ft</b>	<b>766.4 sqm</b>

## VIEWINGS

Strictly by appointment through sole letting agents –

**GARY BLATT** 020 8866 0001  
020 8866 0001  
gary@davidcharles.co.uk

**GEORGE MORIARTY**  
020 8866 0001  
george@davidcharles.co.uk

## AMENITIES

- Automatic Passenger Lifts
- Central Heating
- Perimeter trunking
- 24hr Access
- Kitchenette
- EPC E
- On-site car parking
- On site security



  
**david charles**  
property consultants